

ARIS REPORTS: DISCUSSION QUESTIONS

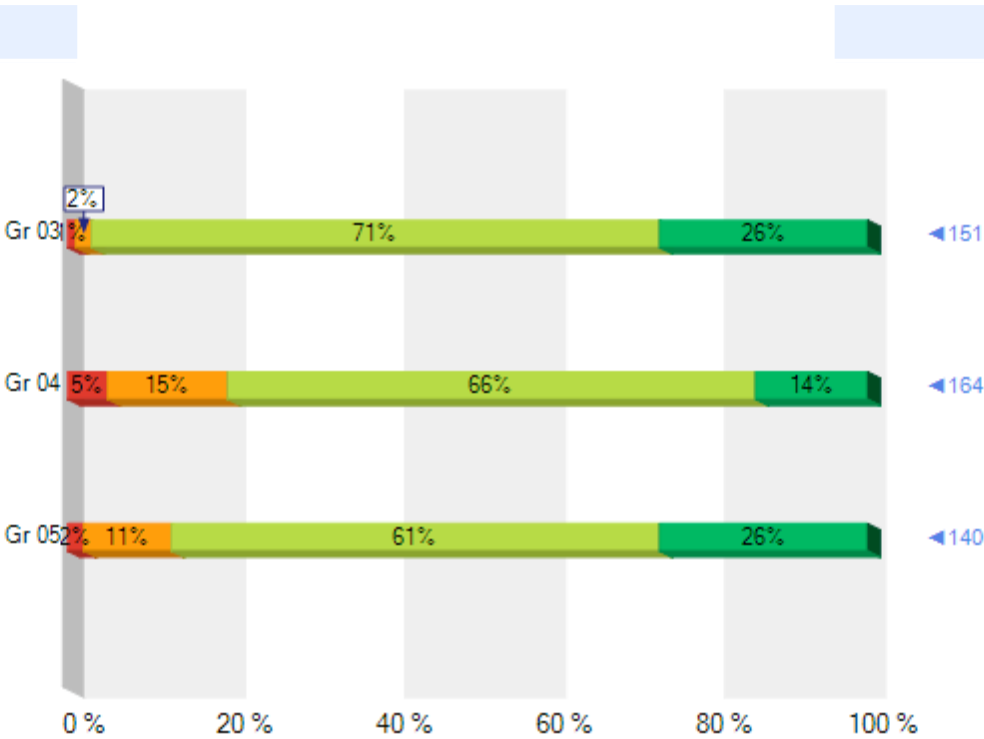
Directions: In small groups, please take about 15 minutes to look through your packet of ARIS Reports and discuss these questions about P.S. 999, a K-8 school in NYC. Then we will have a large-group discussion about each group's responses.

- 1) How did last year's 3rd graders do on this test overall? Last year's 4th graders? 5th graders?
- 2) What areas of strength did last year's 5th graders demonstrate?
- 3) In what areas did last year's 5th graders demonstrate a need for improvement?
- 4) If you were the 5th grade-level team leader at P.S. 999, what steps might these reports about last year's 5th graders lead you to take? What if you were the 6th grade-level team leader? What if you were the principal, a coach, or another school administrator?
- 5) If you were the teacher of Class 506, what steps might these reports about your last year's class lead you to take?
- 6) What additional questions do you have? As an educator at this school, what additional information might help you to determine your instructional next steps, professional development needs, or your focus for collaborative inquiry work?

Report 1: Comparing Populations on 3-8 Math NY State
By Grade For 16K999- P.S. 999

Population	Time	Measure
Boroughs: BROOKLYN School: 16K999 - P.S. 999 Grade: 03,04,05 Subject: Homeroom Course: Homeroom	B: Enrollment at end of selected school year 08-09 (Annual) Current As Of: 08/29/2009	3-8 Math NY State Overall <div><div>Level 1</div><div>Level 2</div><div>Level 3</div><div>Level 4</div></div>

Advanced Filters:
No Advanced Filters have been selected.



Report 1: Comparing Populations on 3-8 Math NY State

Printer-Friendly?

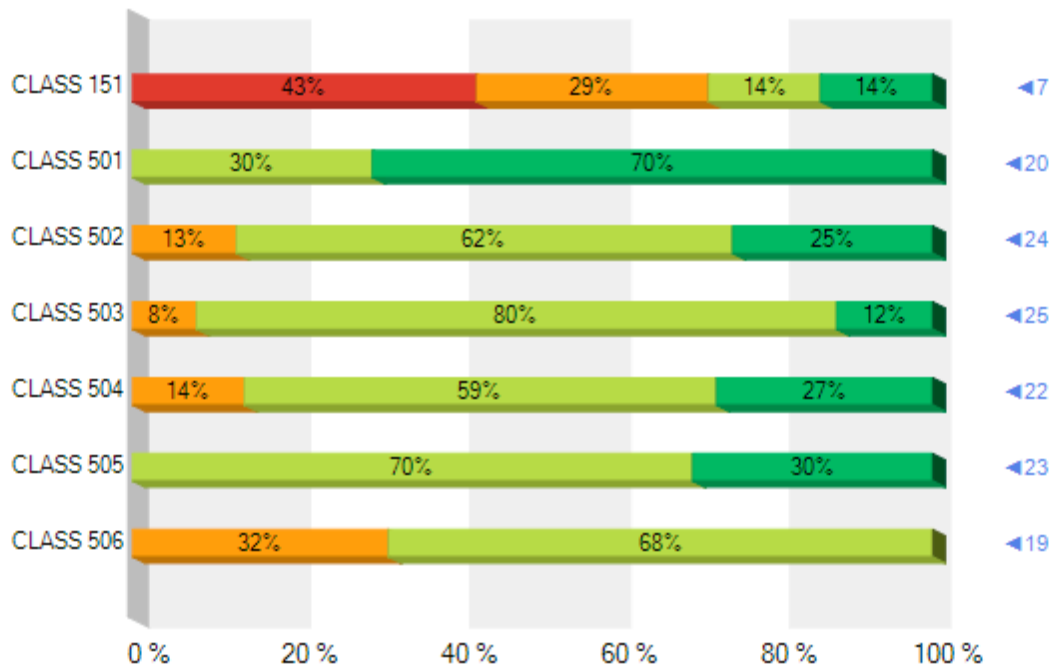
Yes ☒ No ☐

By Class For 16K999 - P.S. 999

Population	Time	Measure
Boroughs: BROOKLYN School: 16K999 - P.S. 999 Teacher: 7 Teachers Class: 7 Classes Grade: 05 Subject: Homeroom Course: Homeroom	B: Enrollment at end of selected school year 08-09 (Annual) Current As Of: 08/29/2009	3-8 Math NY State Overall <div> <div>Level 1</div> <div>Level 2</div> <div>Level 3</div> <div>Level 4</div> </div>

Advanced Filters:

No Advanced Filters have been selected.



Institutions with no data are not included.

Page 1 of 1

NOTE: Class can include homerooms (official classes), course sections, and groups created in ARIS.

DOE employees may access and use individual student data only for legitimate educational purposes, and are required to maintain strict confidentiality of such data.

Report 2: Comparing Measures on 3-8 Math NY State

Printer-Friendly?

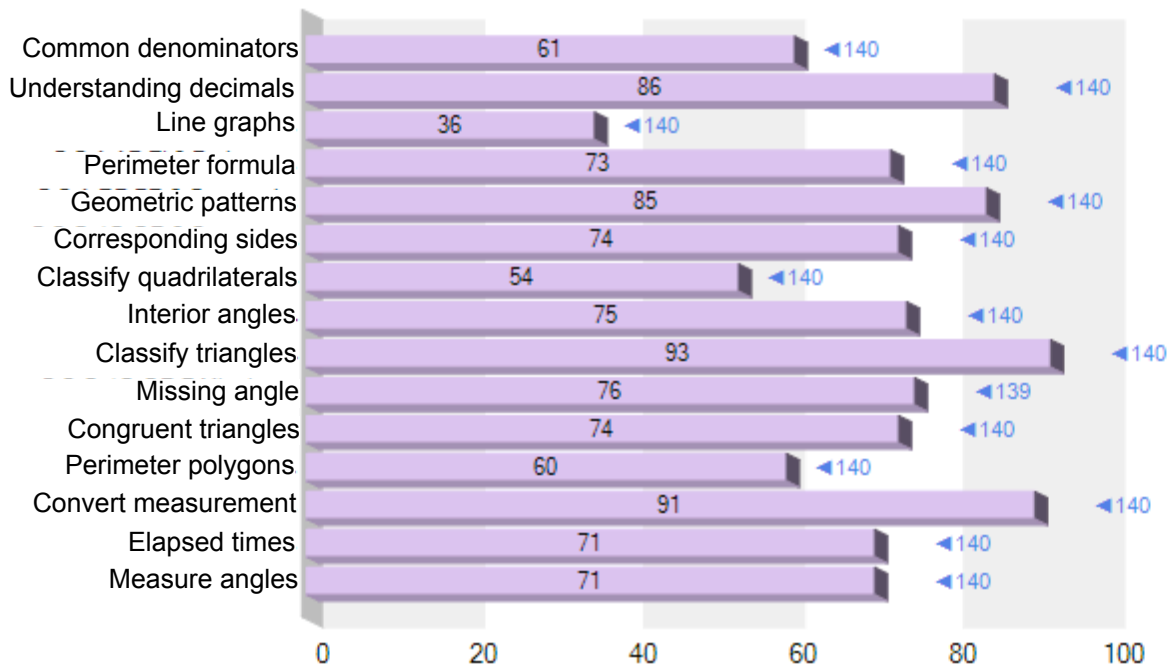
Yes ☒ No ☐

By Grade For Gr 05

Population	Time	Measure
Boroughs: BROOKLYN School: 16K999 - P.S. 999 Grade: 05 Subject: Homeroom Course: Homeroom	B: Enrollment at end of selected school year 08-09 (Annual) Current As Of: 08/29/2009	3-8 Math NY State All Performance Indicator Mean Score [% Correct]

Advanced Filters:

No Advanced Filters have been selected.



Institutions with no data are not included.

Page 1 of 2

Since the number of items aligned to the selected measures may be small, this data should be interpreted with care. Instructional decisions should be based on multiple data points including classroom observations.

DOE employees may access and use individual student data only for legitimate educational purposes, and are required to maintain strict confidentiality of such data.

Report 2: Comparing Measures on 3-8 Math NY State

Printer-Friendly?

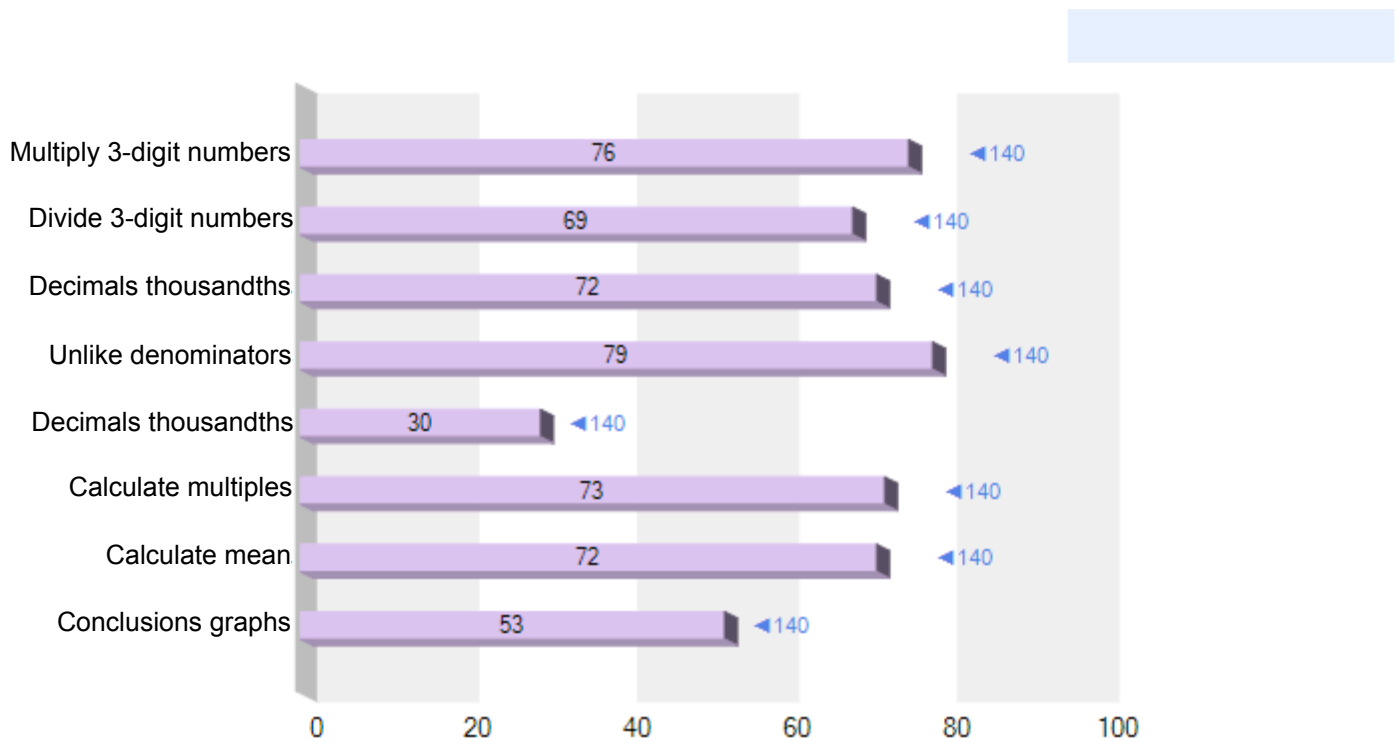
Yes ☒ No ☐

By Grade For Gr 05

Population	Time	Measure
Boroughs: BROOKLYN School: 16K999 - P.S. 999 Grade: 05 Subject: Homeroom Course: Homeroom	B: Enrollment at end of selected school year 08-09 (Annual) Current As Of: 08/29/2009	3-8 Math NY State All Performance Indicator Mean Score [% Correct]

Advanced Filters:

No Advanced Filters have been selected.



Institutions with no data are not included.

Page 2 of 2

Since the number of items aligned to the selected measures may be small, this data should be interpreted with care. Instructional decisions should be based on multiple data points including classroom observations.

DOE employees may access and use individual student data only for legitimate educational purposes, and are required to maintain strict confidentiality of such data.

Report 2: Comparing Measures on 3-8 Math NY State

Printer-Friendly?

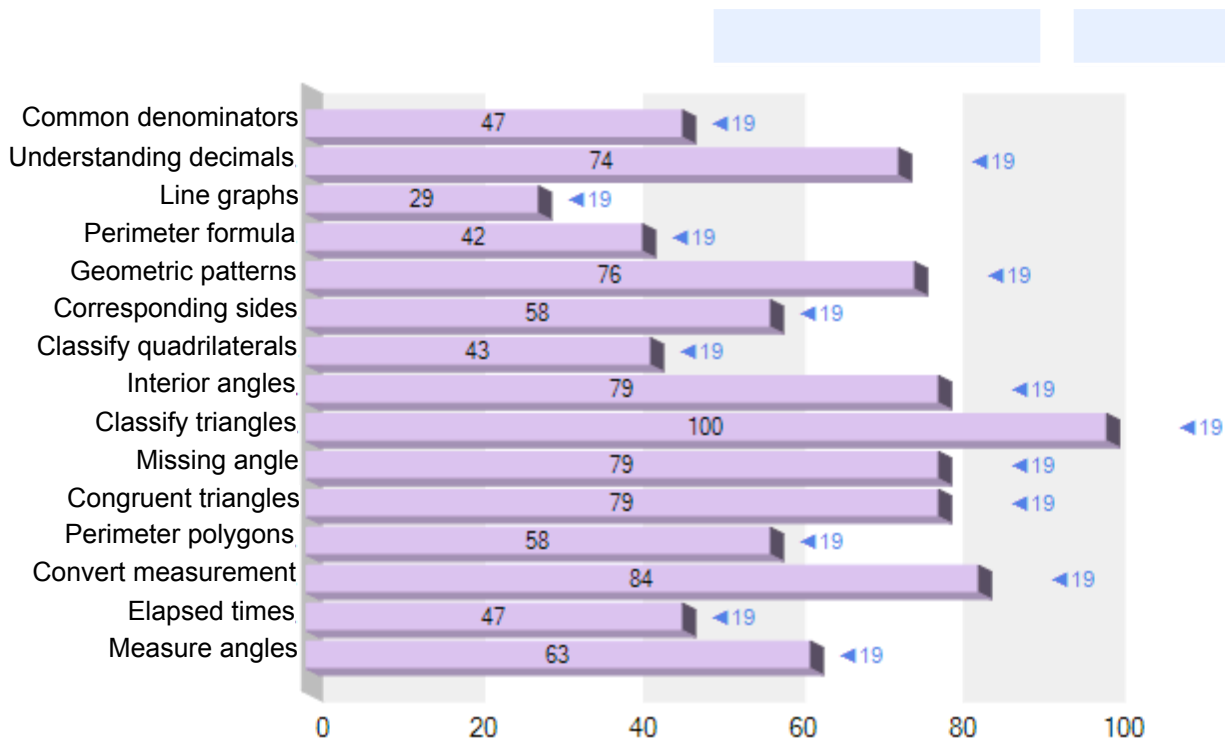
Yes ☒ No ☐

By Class For CLASS 506

Population	Time	Measure
Boroughs: BROOKLYN School: 16K999 - P.S. 999 Teacher: Smart, Sam Class: CLASS 506 Grade: 05 Subject: Homeroom Course: Homeroom	B: Enrollment at end of selected school year 08-09 (Annual) Current As Of: 08/29/2009	3-8 Math NY State All Performance Indicator Mean Score [% Correct]

Advanced Filters:

No Advanced Filters have been selected.



Institutions with no data are not included.

Page 1 of 2

Since the number of items aligned to the selected measures may be small, this data should be interpreted with care. Instructional decisions should be based on multiple data points including classroom observations.

NOTE: Class can include homerooms (official classes), course sections, and groups created in ARIS.

DOE employees may access and use individual student data only for legitimate educational purposes, and are required to maintain strict confidentiality of such data.

Report 2: Comparing Measures on 3-8 Math NY State

Printer-Friendly?

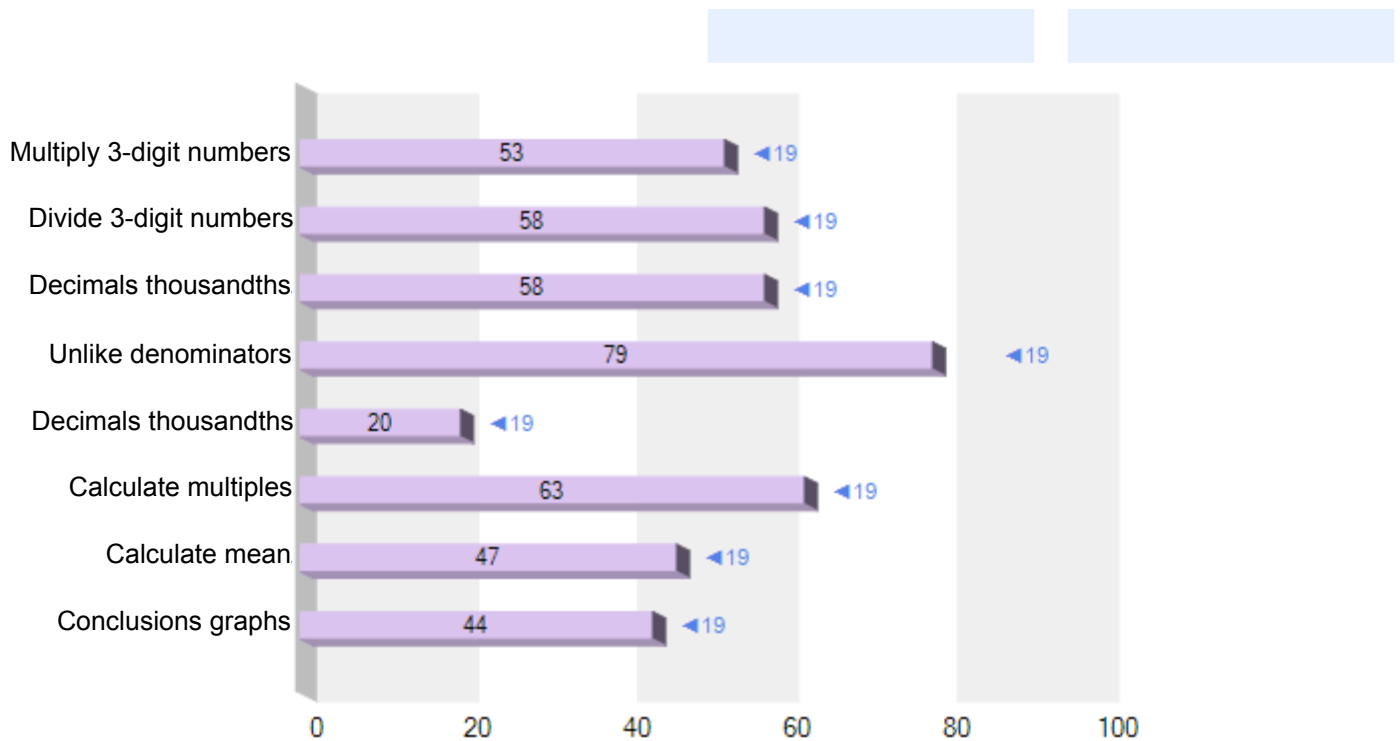
Yes ☒ No ☐

By Class For CLASS 506

Population	Time	Measure
Boroughs: BROOKLYN School: 16K999 - P.S. 999 Teacher: Smart, Sam Class: CLASS 506 Grade: 05 Subject: Homeroom Course: Homeroom	B: Enrollment at end of selected school year 08-09 (Annual) Current As Of: 08/29/2009	3-8 Math NY State All Performance Indicator Mean Score [% Correct]

Advanced Filters:

No Advanced Filters have been selected.



Institutions with no data are not included.

Page 2 of 2

Since the number of items aligned to the selected measures may be small, this data should be interpreted with care. Instructional decisions should be based on multiple data points including classroom observations.

NOTE: Class can include homerooms (official classes), course sections, and groups created in ARIS.

DOE employees may access and use individual student data only for legitimate educational purposes, and are required to maintain strict confidentiality of such data.

Report 5: Correlating 3-8 Math NY State

By Grade For Gr 05

Population	Measure 1	Measure 2
Boroughs: BROOKLYN School: 16K999 - P.S. 999 Grade: 05 Subject: 2 Subjects Course: 2 Courses	3-8 Math NY State Overall Number of Students Assessed Level 1 Level 2 Level 3 Level 4	3-8 Math NY State Overall Level 4 Level 3 Level 2 Level 1
Advanced Filters	Time 1	Time 2
No Advanced Filters have been selected.	'07-'08 - (Annual) Current As Of: 09/05/2009 C: Enrollment in current School Year	'08-'09 - (Annual) Current As Of: 09/05/2009 NOTE: Enrollment Status at Time #2 is not reflected by this report.

